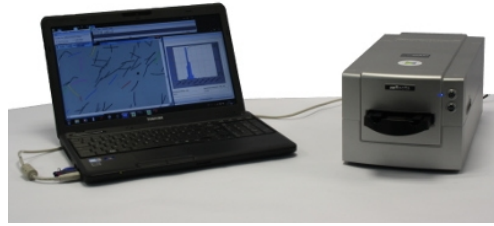


# FlockShape

## Product information

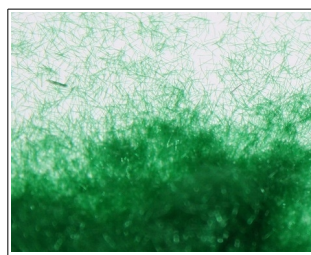
FlockShape is a quality control and characterization system for flock. It is unique in its set of features, simple user interface, and rapid characterization process, from the sample preparation to the printed certificate. The FlockShape software is sold together with a supported scanner and with the supported scanner software. The right hardware is a requirement for a good image analysis with FlockShape.



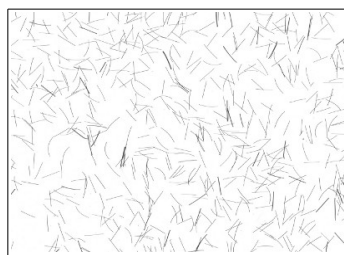
The three main advantages of the medium format scanner are:

- large contact area with high resolution (effective resolution: 2900 dpi)
- simple sample preparation
- a large number of objects are measured and at the same time, making the measurements statistically significant

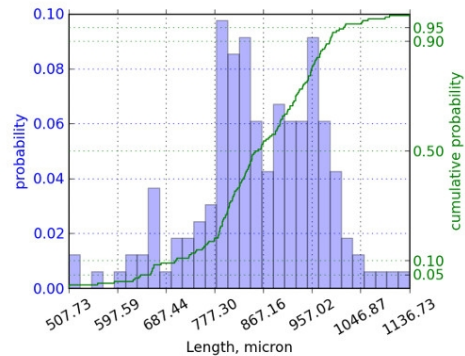
## Example of fineness and width measurement with FlockShape QC M



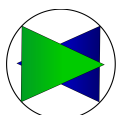
Flock 1 mm, 3,3 Decitex



17,11 mm



The process of flocking is used to change visual and technical properties of different materials. To make sure that the deposition of the small fibers succeeds, the quality of the flock needs to be assured. With FlockShape, the size, shape and orientation of the flock fibers can be analyzed and evaluated.



**Specifications:**

Measurable size range:	10 - 100 $\mu\text{m}$ in fiber width to 30 $\mu\text{m}$ - 5 cm in fiber length
Characterization parameters:	<ul style="list-style-type: none"><li>• shape (curvature and rectangularity)</li><li>• size (fiber width and length)</li></ul>
Typical characterizations:	<ul style="list-style-type: none"><li>• length and width distribution</li><li>• particle size distribution</li><li>• shape descriptors according to ISO 9276 - 6 such as rectangularity and length to width ratio</li></ul>
Typical application:	Flock, or in general any finely cut natural or synthetic fibers
Statistical evaluations:	<ul style="list-style-type: none"><li>• weighted size distribution (histogram and cumulative distribution); logarithmic and linear scale</li><li>• size range selection</li><li>• mean and standard deviation for proportional descriptors (shape factors)</li></ul>
ISO Compliance:	ISO 9276 - 6
Voltage:	220/110 V 50/60 Hz;

